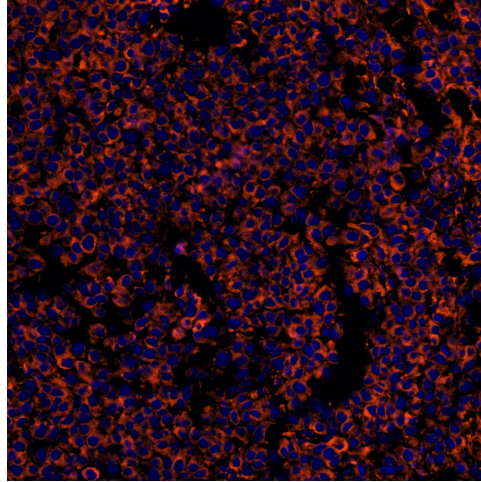


# 产品说明书

## Calreticulin Antibody

货号: ABB5353



产品名称	Calreticulin Antibody
来源宿主	Rabbit
反应种属	Human Mouse Rat
克隆类型	Monoclonal
同种型	IgG
标记	unconjugated
纯化方式	Affinity-chromatography
形式	Liquid
存储溶液	Rabbit IgG in phosphate buffered saline , pH 7.4, 150mM NaCl, 0.02% sodium azide and 50% glycerol.
存储方式	Store at +4°C short term. Store at -20°C long term. Avoid freeze / thaw cycle.
应用	WB IHC-P/mlHC ICC/IF IP FC
使用方法	WB 1:500~1:2000 IHC-P/mlHC 1:50~1:200 ICC/IF 1:50~1:200 IP 1:50 FC 1:50
有效期	one year
别名	CALR; CRT; FLJ26680; RO; SSA; cC1Qr; CRP55; CRTC; HACBP;
免疫原	A synthesized peptide derived from human Calreticulin - ER Marker
SwissProt	P27797
分子量	60kDa
产品介绍	Calcium is a universal signaling molecule involved in many cellular functions such as cell motility, metabolism, protein modification, protein folding and apoptosis. Calcium is stored in the endoplasmic reticulum (ER), where it is buffered by calcium bind

For research use only!

慧蓝生物 竭诚为您服务

地址: 上海市浦东新区周浦镇天雄路588弄, 电话: 19101712317, 邮箱: 469340997@qq.com