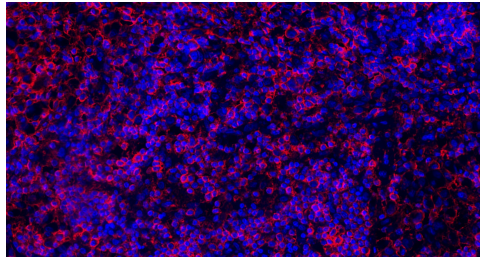


## 产品说明书

## CD21 Antibody

货号: ABB5710



产品名称	CD21 Antibody
来源宿主	Rabbit
反应种属	Human Mouse
克隆类型	Monoclonal
同种型	IgG
标记	unconjugated
纯化方式	Affinity-chromatography
形式	Liquid
存储溶液	Rabbit IgG in phosphate buffered saline , pH 7.4, 150mM NaCl, 0.02% sodium azide and 50% glycerol.
存储方式	Store at +4°C after thawing. Aliquot store at -20°C. Avoid repeated freeze / thaw cycles.
应用	WB IHC-P/mlHC ICC/IF IP FC
使用方法	WB 1:1000~1:5000 IHC-P/mlHC 1:50~1:200 ICC/IF 1:50~1:200 IP 1:50 FC 1:50
有效期	one year
别名	CR2; C3DR; CD21 antigen; CVID7; Complement receptors type 2; CD21; Complement C3d receptor; EBV receptor; SLEB9; Complement receptor type 2; CR; Epstein-Barr virus receptor;
免疫原	A synthesized peptide derived from human CD21
SwissProt	P20023
分子量	155kDa
产品介绍	Receptor for complement C3Dd, for the Epstein-Barr virus on human B-cells and T-cells and for HNRPU. Participates in B lymphocytes activation. (Microbial infection) Acts as a receptor for Epstein-Barr virus.

For research use only !

慧蓝生物 竭诚为您服务

地址: 上海市浦东新区周浦镇天雄路588弄, 电话: 19101712317, 邮箱: 469340997@qq.com