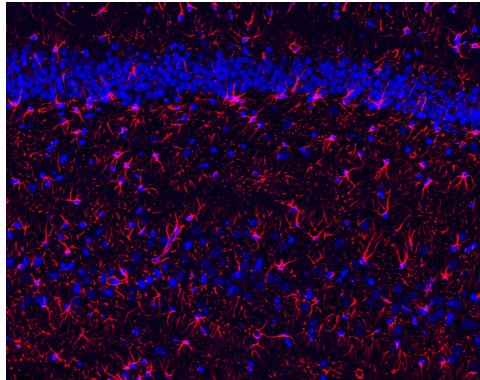


产品说明书

GFAP Antibody

货号: ABB5424



产品名称	GFAP Antibody
来源宿主	Rabbit
反应种属	Human Mouse Rat
克隆类型	Monoclonal
同种型	IgG
标记	unconjugated
纯化方式	Affinity-chromatography
形式	Liquid
存储溶液	Rabbit IgG in phosphate buffered saline , pH 7.4, 150mM NaCl, 0.02% sodium azide and 50% glycerol.
存储方式	Store at +4℃ after thawing. Aliquot store at -20℃. Avoid repeated freeze / thaw cycles.
应用	WB IHC-P/mIHC ICC/IF IP
使用方法	WB 1:10000~1:50000 IHC-P/mIHC 1:50~1:200 ICC/IF 1:50~1:200 IP 1:30
有效期	one year
别名	GFAP; FLJ45472; gfapl; ALXDRD; CB345;
免疫原	A synthesized peptide derived from human GFAP
SwissProt	P14136
分子量	50kDa
产品介绍	GFAP is commonly used as a marker for intracranial and intraspinal tumors arising from astrocytes. In addition, GFAP intermediate filaments are also present in nonmyelin-forming Schwann cells in the peripheral nervous system

For research use only !

慧蓝生物 竭诚为您服务

地址: 上海市浦东新区周浦镇天雄路588弄, 电话: 19101712317, 邮箱: 469340997@qq.com