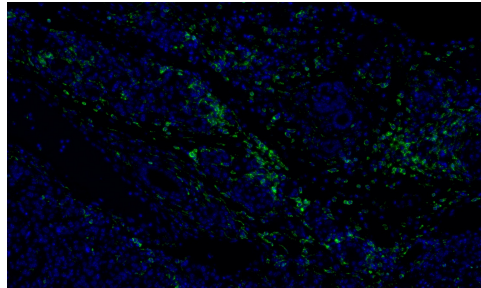


# 产品说明书

F4/80

货号: ABB00010



产品名称	F4/80
来源宿主	Rabbit
反应种属	Mouse
克隆类型	Rabbit monoclonal
克隆号	17-45
同种型	IgG
标记	unconjugated
纯化方式	Protein A affinity purified
形式	Liquid
存储溶液	PBS (pH7.4), 0.05% BSA, 40% Glycerol. Preservative: 0.05% Sodium Azide. Stable for 12 months.
存储方式	Store at +4°C after thawing. Aliquot store at -20°C. Avoid repeated freeze / thaw cycles. Stable for 12 months.
应用	WB, IHC-P, mIHC, IF-Tissue, IF-cell
使用方法	WB: 1:500-1:1000; IHC-P: 1:500-1:1000; mIHC: 1:500-1:1000; IF-Tissue: 1:50-1:200; IF-Cell: 1:50-1:200
有效期	one year
别名	ADGRE1, Adhesion G protein-coupled receptor E1, EGF like module receptor 1, EMR1, EMR1 hormone receptor, F4/80, TM7LN3
免疫原	Recombinant protein within mouse F4/80 aa 1-650 / 931
SwissProt	Q61549
细胞定位	Cell membrane
分子量	102kDa
产品介绍	F4/80 also known as Adhesion G protein-coupled receptor E1 (ADGRE1), is a surface receptor with seven transmembrane segments that belong to the EGF-7-transmembrane family of G protein-coupled receptors. EMR1 expression is restricted to eosinophilic granulocytes, where expression is overlapping with the eotaxin receptor CCR3 and the immunoglobulin-like lectin Siglec-8. Absence on other leukocytes, including basophils, implies that EMR1 is a highly specific marker for eosinophils in humans and may be used as a novel therapeutic target for eosinophilic disorders. F4/80, the murine homolog of EMR1, is a marker of murine macrophage. The apparent molecular weight of F4/80 is 160 kDa, which is larger than the calculated molecular weight due to post-translational modifications.

For research use only !

**慧蓝生物 竭诚为您服务**

地址: 上海市浦东新区周浦镇天雄路588弄, 电话: 19101712317, 邮箱: 469340997@qq.com