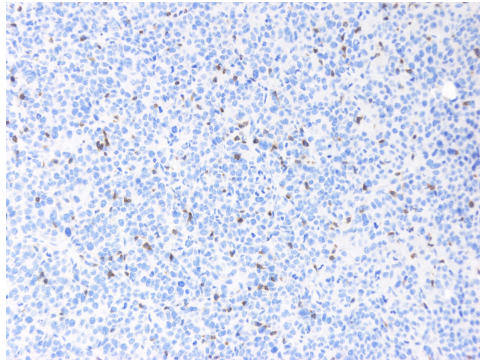


产品说明书

CD3 epsilon

货号: ABB00013



产品名称	CD3 epsilon
来源宿主	Rabbit
反应种属	Human, Mouse, Rat
克隆类型	Rabbit monoclonal
克隆号	R1-37
同种型	IgG
标记	unconjugated
纯化方式	Protein A affinity purified
形式	Liquid
存储溶液	PBS (pH7.4), 0.05% BSA, 40% Glycerol. Preservative: 0.05% Sodium Azide. Stable for 12 months.
存储方式	Store at +4°C after thawing. Aliquot store at -20°C. Avoid repeated freeze / thaw cycles. Stable for 12 months.
应用	IHC-P, mIHC, WB, IP
使用方法	IHC-P: 1:100-1:500; mIHC: 1:100-1:500; WB: 1:500; IP: 1:25
有效期	one year
别名	CD3E, CD3 epsilon, T-cell surface glycoprotein CD3 epsilon chain, T-cell surface antigen T3/Leu-4 epsilon chain, T3E
免疫原	N/A
SwissProt	P07766
细胞定位	Membrane
分子量	23kDa
产品介绍	<p>The T cell antigen receptor (TCR) recognizes foreign antigens and translates such recognition events into intracellular signals that elicit a change in the cell from a dormant to an activated state. Much of this signaling process can be attributed to a multisubunit complex of proteins that associates directly with the TCR. This complex has been designated CD3 (cluster of differentiation 3). CD3 is composed of four polypeptides: ζ, γ, ϵ and δ. Each of these polypeptides contains at least one immunoreceptor tyrosine-based activation motif (ITAM). Engagement of TCR complex with foreign antigens induces tyrosine phosphorylation in the ITAM motifs and phosphorylated ITAMs function as docking sites for signaling molecules such as ZAP-70 and p85 subunit of PI-3 kinase. TCR ligation also induces a conformational change in CD3ϵ, such that a proline region is exposed and then associates with the adaptor protein Nck.</p>

For research use only !

慧蓝生物 竭诚为您服务

地址: 上海市浦东新区周浦镇天雄路588弄, 电话: 19101712317, 邮箱: 469340997@qq.com