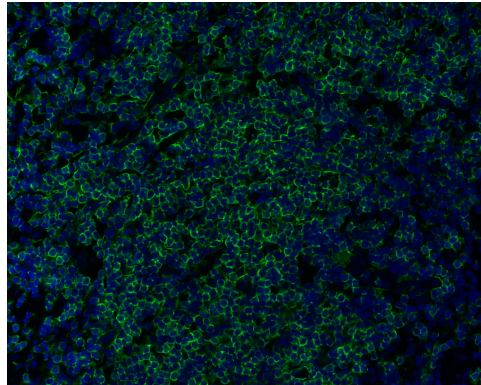


# 产品说明书

CD20

货号: ABB00017



产品名称	CD20
来源宿主	Rabbit
反应种属	Human, Mouse, Rat
克隆类型	Rabbit monoclonal
克隆号	R1-33
同种型	IgG
标记	unconjugated
纯化方式	Protein A affinity purified
形式	Liquid
存储溶液	PBS (pH7.4), 0.05% BSA, 40% Glycerol. Preservative: 0.05% Sodium Azide. Stable for 12 months.
存储方式	Store at +4°C after thawing. Aliquot store at -20°C. Avoid repeated freeze / thaw cycles. Stable for 12 months.
应用	IHC-P, mIHC, ICC, WB
使用方法	IHC-P: 1:200-1:500; mIHC: 1:200-1:500; ICC: 1:100-1:250; WB: 1:100-1:500
有效期	one year
别名	Leukocyte surface antigen Leu-16, Bp35, B-lymphocyte surface antigen B1, B-lymphocyte antigen CD20
免疫原	N/A
SwissProt	P11836
细胞定位	Cell membrane
分子量	33kDa
产品介绍	<p>The CD20 antigen is a membrane-embedded, non-glycosylated phosphoprotein, 33-37 kDa. CD20 functions as a Ca<sup>2+</sup>-permeable cation channel, involved in the regulation of B-cell activation, proliferation and differentiation. CD20 appears on the surface of the pre-B lymphocyte between the time of light chain rearrangement and expression of intact surface immunoglobulin and is lost just before terminal B-cell differentiation into plasma cells. Surface expression of CD20 on activated B cells is approximately 4-fold greater than that found on resting B cells. CD20 is virtually specific for normal B-cells. A weak expression has been demonstrated in a subpopulation of T-cells, but not in any other cell type.</p>

For research use only !

**慧蓝生物 竭诚为您服务**

地址: 上海市浦东新区周浦镇天雄路588弄, 电话: 19101712317, 邮箱: 469340997@qq.com