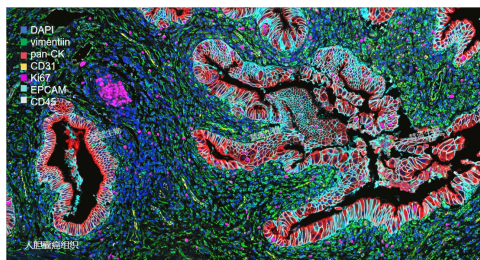


产品说明书

EpCAM (Y0290) Rabbit mAb

货号: HL18166



产品名称	EpCAM (Y0290) Rabbit mAb
来源宿主	Rabbit
反应种属	Human, Mouse, Rat,
克隆类型	Rabbit monoclonal
克隆号	Y0290
同种型	IgG
标记	unconjugated
纯化方式	Protein A affinity purified.
形式	Liquid
存储溶液	PBS (pH7.4), 50% Glycerol, 0.05% BSA, 0.05% Proclin 300
存储方式	Store at +4°C after thawing. Aliquot store at -20°C. Avoid repeated freeze / thaw cycles.
应用	WB, IHC, mIHC, IF
使用方法	IHC 1:100-1:500; mIHC 1:100-1:500; WB 1:500-1:2500; IF 1:100-1:500
有效期	one year
别名	EPCAM; GA733-2; M1S2; M4S1; MIC18; TACSTD1; TROP1; Epithelial cell adhesion molecule; Ep-CAM; Adenocarcinoma-associated antigen; Cell surface glycoprotein Trop-1; Epithelial cell surface antigen; Epithelial glycoprotein; EGP; Epithelial gly
SwissProt	P16422
细胞定位	Membrane
分子量	40kD
产品介绍	This gene encodes a carcinoma-associated antigen and is a member of a family that includes at least two type I membrane proteins. This antigen is expressed on most normal epithelial cells and gastrointestinal carcinomas and functions as a homotypic calcium-independent cell adhesion molecule. The antigen is being used as a target for immunotherapy treatment of human carcinomas. Mutations in this gene result in congenital tufting enteropathy. [provided by RefSeq, Dec 2008],

For research use only !

慧蓝生物 竭诚为您服务

地址: 上海市浦东新区周浦镇天雄路588弄, 电话: 19101712317, 邮箱: 469340997@qq.com